



DFMPro[®]

A Geometric Product

REWORK

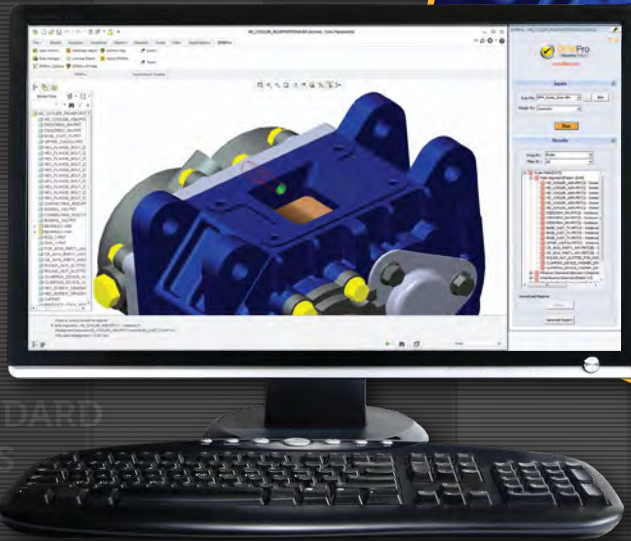
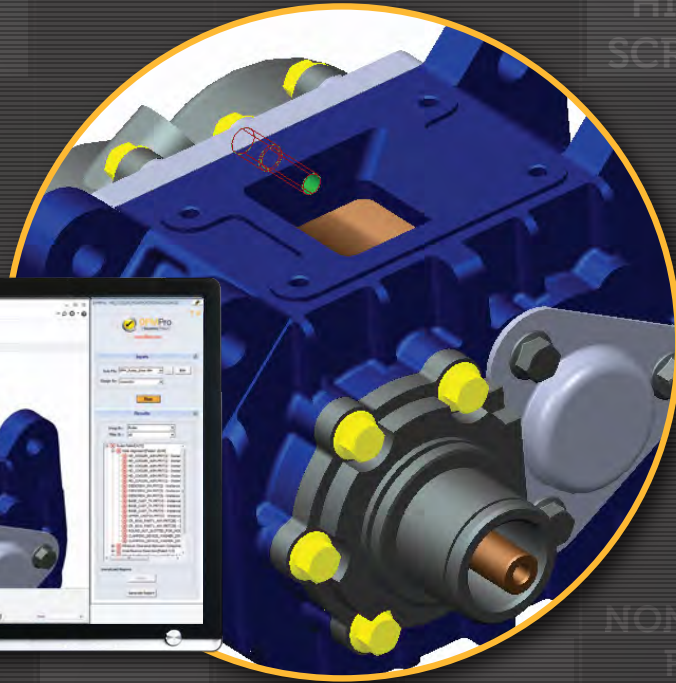
REWORK SAVINGS

15%

AND MORE...

HIGHER
MANUFACTURING
TIME

HIGH
SCRAP



NON-STANDARD
TOOLS

NON-STANDARD
FEATURES

TIGHT
TOLERANCES

DESIGN RIGHT. FIRST TIME.

Winning in today's global marketplace requires more than just creating innovative product designs. To succeed, you must also focus on product quality, manufacturability, development time and costs. On a global average, 30 percent of engineering effort is spent on rework due to late design changes occurring because of downstream manufacturability and assembly issues.

DFMPro, a best practice driven design for manufacturing software, enables engineering executives to make informed design decisions by identifying and addressing downstream manufacturability, assembly, quality, serviceability, (DFx) related issues upfront and reducing unnecessary rework and engineering changes.

Using DFMPro you can maximize engineering productivity by 15%



Easy and Powerful DFM Software to Drive Measurable Results Fast

Reduces rework and improves productivity by as much as 15%

- DFMPro validates upstream manufacturability, identifying design areas that are difficult, expensive or impossible to manufacture
- Automates and formalizes the design review process using best-practice handbooks and industry associations
- Evaluates design models for manufacturing and assembly and suggests corrective actions based on library of 100+ design rules for core manufacturing processes
- Provides a mechanism for capturing best practice knowledge and brings in standardization across the organization

Using DFMPro, companies are able to significantly reduce rework and engineering change orders (ECOs), and reap immediate benefits by reducing defects, costs and delays

Key Benefits

- Automates in-house DFM practices incorporated in organization's standard operating procedures
- Captures design errors early in the design stage and ensures past mistakes are not repeated
- Leverages and reuses experience of experts
- Facilitates on-the-job training of design engineers



Faster and Smarter Innovation with First Time Right Design

Automates the DFM Review Process

DFMPro automates and formalizes the design review process

Seamlessly integrated inside PTC CREO Parametric™, Siemens NX™ and SOLIDWORKS®

Facilitates corrections on designs without leaving the familiar CAD environment

Eliminates time-consuming file transfers using standard formats such as IGES and STEP

Enables Best Practice Knowledge Capture and Dissemination

Provides a highly customizable framework to capture and integrated in-house best practices, tribal knowledge and industry standards in form of design guidelines

Out-of-Box industry best practices available in form of DFM guidelines for all major manufacturing processes

Facilitates continuous design improvements and knowledge retention of retiring workforce

Informed Decision Making with Comprehensive 2D and 3D Reports

Detailed reports enables design engineers to make informed decisions and explore design alternatives to develop a more robust, cost-effective and producible design

Generates interactive 3D & 2D reports in multiple formats(HTML, Excel and eDrawings® Publisher) for easier analysis and interpretation

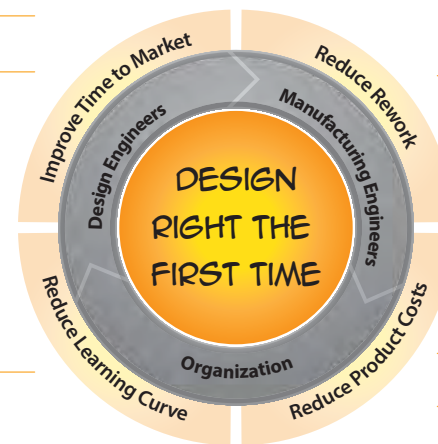
Improves design collaboration between departments, suppliers and vendors

Easily Integrates Into Existing Enterprise Infrastructure

Integrates easily with PLM, ERP, and MES systems

Automatically gets the required parameter information for existing or new DFM rules

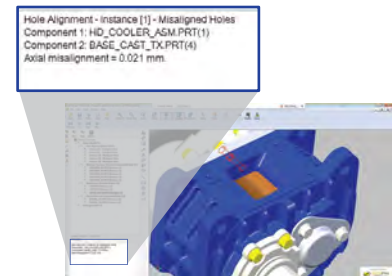
Scalable framework for capturing and disseminating manufacturing knowledge upstream



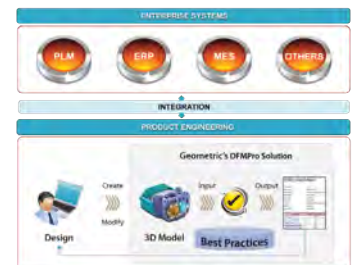
Run DFM analysis in familiar CREO Parametric™ interface



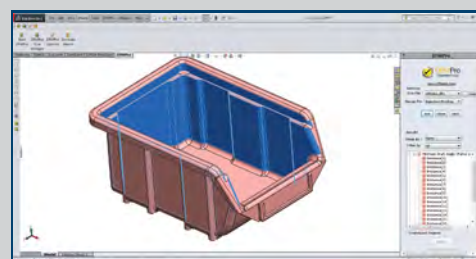
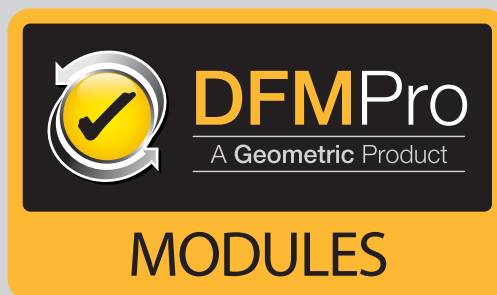
Capture best practices knowledge



Improves design collaboration and reviews through powerful 3D reports



Integrates easily with existing enterprise infrastructure



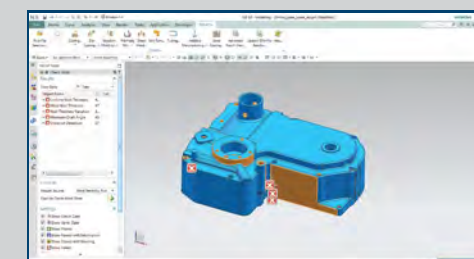
Injection Molding



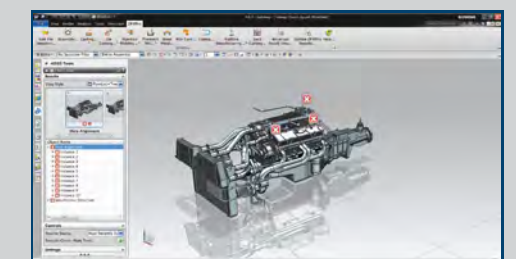
Sheet Metal



Machining



Casting



Assembly

Motorola Solutions Inc.

"Geometric Limited has quick, test-driven analysis tools – DFMPro and GeomCaliper. They are indeed simply integrated, intuitive and seamless in Creo (Pro/Engineer).The results of tool aid us in improving our design and reducing issues in downstream"

Paul Lalinde

Engineer Mechanical Staff Principal Motorola Solutions Inc.

Toshiba Corporation

"Now 3D design data of our products are checked by the DFMPro in the design process. Our conventional checking process by designers was highly time-consuming. In contrast, the DFMPro checking is truly fast and reliable in searching the parts to be redesigned or corrected, and the checking criteria ca be customized for the appropriate checking of our own products. As a result, we successfully reduced 75% of the checking time of the wall thickness to enhance the efficiency and effectiveness of our design improvement before the release of drawings."

Kaoru Mizoroki

Group Manager Toshiba Corporation

Whirlpool Corporation

"DFMPro helps our designers quickly identify the issues which are otherwise difficult to capture at the design stage. These issues include things like mold wall thickness and undercuts in plastic parts, incorrect bends in sheet metal parts which cause problems downstream. This tool helps our design teams understand the processes involved in manufacturing. In other words, helps them understand how to Design for Manufacturing. This leads to a significant reduction in design iterations due to issues with manufacturability and a reduction in design checking time. Our aim is to get designs right the first time and this tool helps us achieve this goal."

SK Pradeep Kumar *Director – E&T Capabilities*

George Angelov *Director – Global Prototyping & Planning Whirlpool*



Geometric

People Building Partnerships

Contact us

America +1.480.367.0132

Asia-Pacific +91.22.6705.6880

www.dfmpro.com

dfmpro.marketing@geometricglobal.com

About Geometric

Geometric is a specialist in the domain of engineering solutions, services and technologies. Its Geometry Technology Solutions (GTS) business unit develops cutting-edge point productivity solutions that enhance design and improve manufacturing operations. The end-user products from Geometric include CAMWorks®, eDrawings® Publisher, DFMPro®, GeomCaliper®, 3DPaintBrush™, CAMWorksXpress® and Glovius®. The key technologies from Geometric are NestLib®, Feature Recognition (FR), GeomDiff and 3DSearchIT®. Geometric licenses these technologies to OEM partners and also designs and implements customized process solutions using these technologies for industrial customers.

For further details about Geometric's GTS business unit, please visit www.geometricglobal.com/products

The copyright/ trademarks of all products referenced herein are held by their respective companies.